

DL-142

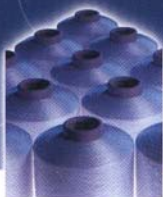


顶立上销

**DL TOP APRON
CRADLE**

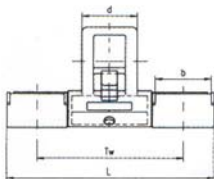


中外合资咸阳顶立机械制造有限公司
XIANYANG DURABLE MANUFACTURING CO.,LTD



DL-142 上销以纤维增强聚酰胺为主体材料, 采用活动弹性钳口, 具有使皮圈自动张紧运转平稳、刚度好、不变形、维护简单、使用寿命长等显著特点。与传统的金属上销相比, 可以有效地降低成纱的粗细节和棉节数。经纺纱测试, DL-142 上销已达到国外同类产品的优良质量水平, 并具有良好的防静电性能。

DL-142 适用于纺 38mm 以下棉型纤维, 可与国内外各类型的 70mm、75mm 锭距的细纱机之 YJ2-142、YJ-132V、TF18 系列、SKF/Texparts PK225、PK2025、PK2055 等类似的摇架配套使用。



件号	Type	Tw	L	b	d	R	E
DL-14270		68.4	99.8	28.4	28.4	35	51.4
DL-14275		75	106.4	28.4	28.4	35	51.4

DL-142 Top Apron Cradle mainly made of polyamide enforced by glass fibre, adopting flexible elastic nip, enjoys salient features----make apron tension automatically & run smoothly, stiffness, non-deformation, easy maintenance and long service life. Compared with the traditional metal type top apron cradle, it will effectively reduce the yarn's IPI level (thin, thick places and neps). After spinning tests, DL-142 top apron cradle has reached the same top quality as other famous international similar products, and it also has good anti-static performance.

DL-142 is suitable for processing fibre length up to 38mm, fits weighting arms of China's YJ2-142, YJ-132V & TF18 series, German's SKF/Texparts PK225, PK2025, PK2055 or equivalent arms on the various models of ring spinning frame with 70mm, 75mm spindle gauge.

地址: 陕西省咸阳市秦都区沜西工业区

Add: Fengxi Industrial Zone, Qindu District, Xianyang, Shaanxi, China
电话Tel: 0086-910-3813928, 3813808 传真Fax: 0086-910-3813808
邮编 Postcode: 712046 电子邮箱email: durable99@hotmail.com